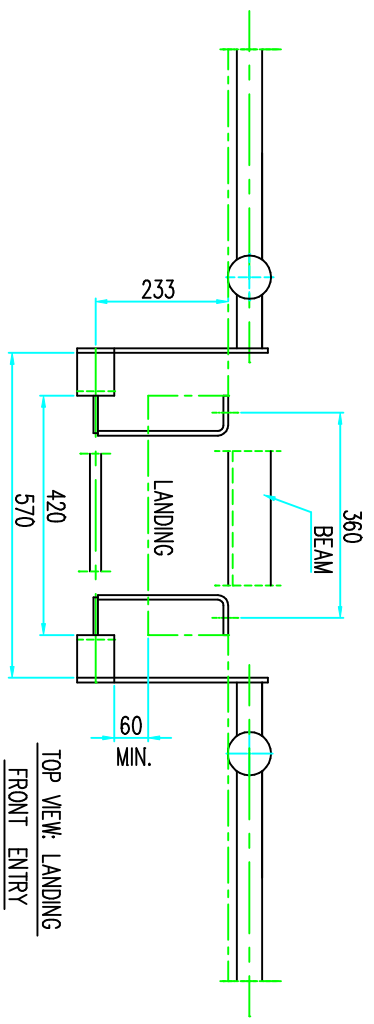
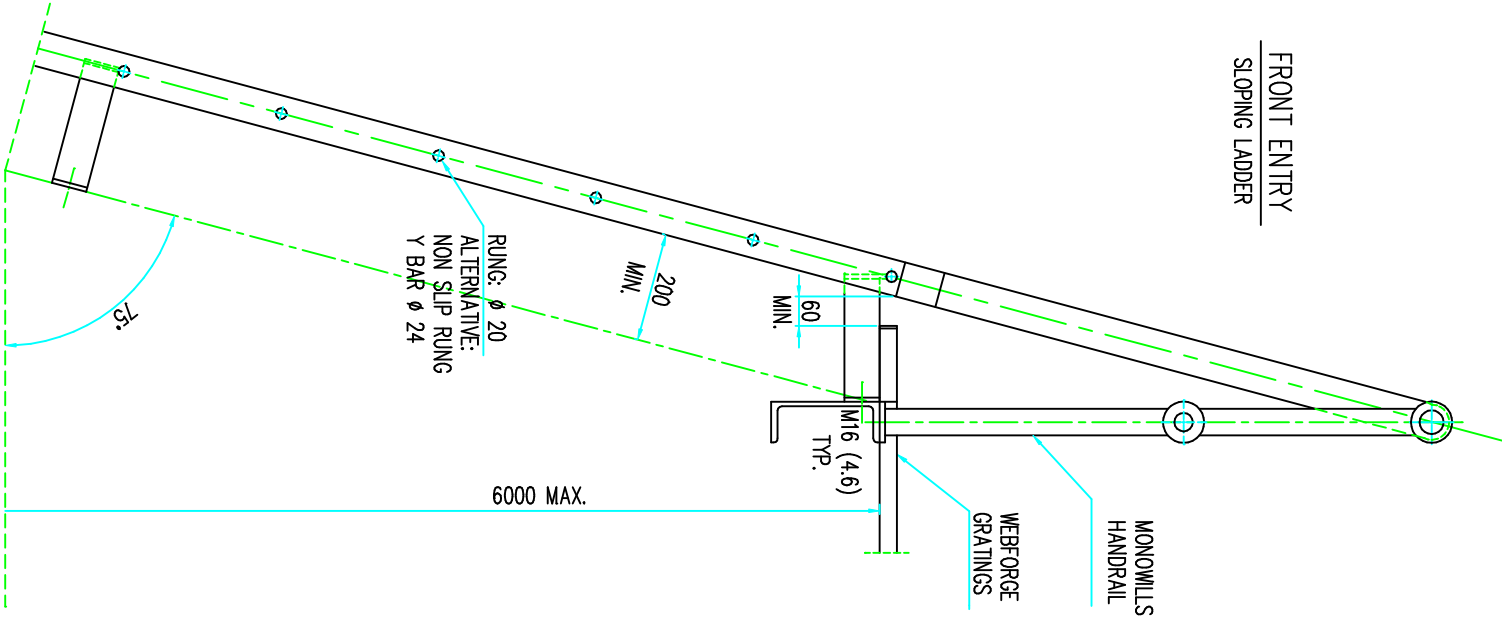


FRONT ENTRY
SLOPING LADDER



ITEM	QTY	SECTION	LENGTH	HOLES	REMARKS

HALLWELD-BENNETT P/L <small>A.B.N.56 006123037</small> 14 NINTH ST. WINGFIELD S.A. 5013 PH.(08) 83470800 FAX (08)83470230		TD DRN. DRU. CLIENT WELD 13.05.99	
SCALE 1:10		CONTRACT SLOPING RUNG LADDER (FRONT ENTRY)	
FINISH JOB NO.		DRG. NO. HB-L-02	
TOTAL ACCESS & SAFETY SYSTEMS " ACCESS SYSTEMS "		REMARKS	

